



## Cut & Fill

Cut & Fill can slash cut and fill calculation time and increase your project profits.

In minutes, Cut & Fill determines quantities at an accuracy level difficult to match using manual takeoff methods. And a more accurate earthwork estimate means less money wasted on costly mistakes.

Developed for Microsoft Windows operating systems, the 32-bit architecture of Cut & Fill offers solid software performance, speed and extended use of computer memory—all ensuring smoother, faster estimating.

You can quickly calculate cut, fill and strip quantities by simply digitizing the boundary of work, contours, layers, elevations, etc., for the existing and proposed surfaces. The software then determines the cut and fill quantities and graphically displays the results.

With Cut & Fill you'll produce more accurate earthwork estimates in less time. And that's the bottom line.

### Features

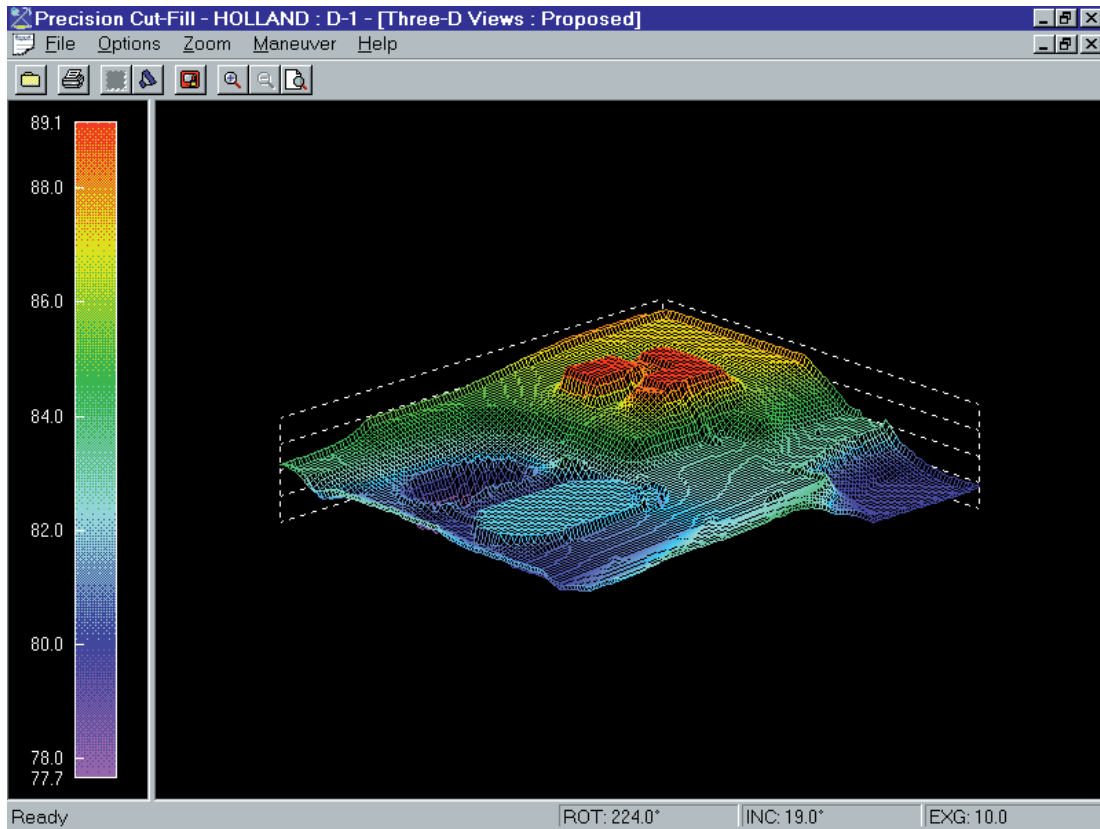
- Interfaces with Estimating and Digitizer software for Sage Timberline Office.
- Is compatible with virtually any digitizer hardware that uses a 32-bit WinTAB driver.
- Provides support for Windows-compatible plotters.
- Calculates cut and fill quantities almost instantly using contour lines, sloping lines, elevation points, layers and structures.

- Lets you define and save multiple boundaries and perimeters as Areas of Interest (AOI). For example, you can store the entire site as an AOI or each phase of the project.
- Automatically adjusts for soil shrinkage and expansion.
- Displays contours as they are traced to provide a visual check of your work.
- Uses the grid cell calculation method for maximum accuracy.
- Provides cross-sectional display of all surfaces.
- Calculates substrata volumes by tracking multiple surfaces per drawing.
- Allows you to create and store an unlimited number of surfaces and drawings for each project.
- Has "zoom-in" capabilities on the screen.
- Stores project information (e.g., project description, location, estimator, plan number, bid date) online.
- Adjusts automatically for top soil removal and replacement.
- Offers extensive online help throughout the system.
- Displays surfaces in 3-D graphics.
- Magnifies 3-D graphics to give you a closer look.
- Offers user-defined elevation ranges to protect against input errors.

### Reports

- Grid Values Report: Shows detailed elevations for each grid cell of a selected surface, both calculated and actual, allowing you to double-check data accuracy.
- Total Volumes Report: Compares two surfaces for each drawing and gives a tabular summary of cut and fill volumes for the site or specific area of interest.
- Areas and Volumes Report: Displays the area and volume of each enclosed entity (layers and structures) for a single surface in a tabular and/or graphical form.
- Cross Sections Report: Visually compares as many surfaces as needed. Allows division of site into cross sections for error-checking or to view the locations of cuts and fills.
- Site Balance Report: Compares two surfaces and calculates the amount to raise or lower the proposed surface in order to balance the site.
- 3-D Views: Shows the surface model in a three-dimensional view. Select a single surface, or a view of the difference between two surfaces, to check for errors or present the project.

**Cut & Fill** is a part of Sage Timberline Office, fully integrated software created to streamline work and connect the people you depend on to build your business.



*Cut & Fill quantities are quickly determined and 3-D graphics displayed for immediate analysis.*

Throughout Australia:  
Synergy Information Systems  
Phone: 1300 552 455



800.628.6583 | Fax 888.477.0371 | [www.sagesoftware.com](http://www.sagesoftware.com)

©2006 Sage Software, Inc. All rights reserved. The Sage Software logo and the Sage Software product and service names mentioned herein are registered trademarks or trademarks of Sage Software, Inc., or its affiliated entities. All other trademarks are the property of their respective owners.  
01/06