



## scheduling

Actively manage projects on the job site, improve communications, and exchange information between your field supervisors and the office with Scheduling, part of the Workflow Management Suite for Production.

Scheduling provides users of handheld devices with a fingertip information system allowing superintendents to monitor, control, and communicate daily construction activities. From the field they're able to keep accurate construction schedules and have the information they need to reduce costly errors and maintain consistent cycle times. They're able to efficiently:

- Manage key schedule tasks.
- Update the project schedule.
- Generate supplier and trade notifications by print, fax or e-mail.
- Look up job, vendor, and purchase order activity\* information.

### **Set up scheduling steps from A to Z.**

Scheduling can be operated as a stand alone application, used with Timberline Office accounting software, or further integrated with BuilderMT's Workflow Management Suite of products. If you choose to integrate with Timberline's accounting or production management software, information contained in Timberline Office® is available to jumpstart the scheduling process.

Whether you choose to integrate or not, schedule templates developed from a builder-defined master list of construction activities and milestones get your jobs started on the right foot. Choose the start date and a specific schedule is generated based on construction sequence, duration, and lag times. Four dates are tracked for

each activity: baseline, projected, scheduled, and actual. (Projected dates are based on late starts and finishes or early starts and finishes.)

By tracking these dates you can monitor construction status by individual job, community, superintendent, or job, trade, community for:

- Baseline vs. projected
- Projected vs. actual
- Scheduled vs. actual
- Activity variance by subcontractor
- Trade contractor resource allocations

### **Reporting and scheduling activities.**

With a database of information supporting it, Scheduling lets you generate reports for trade contractors, suppliers, and superintendents. Then you can automatically deliver the information via fax or e-mail according to a predetermined schedule. Send updated schedules the same way.

A scheduled date for each activity allows a field supervisor to electronically notify a trade or supplier when to start an activity. If a particular activity must be re-scheduled, a custom list of variance codes allows the super-intendent to capture an explanation. The system also keeps track of how many times a superintendent reschedules trades as an indicator of how well the job is being managed.

### **Streamline PO payment and improve communications.**

With tools in hand to record daily construction activities and keep schedules current, superintendents can keep office personnel up-to-date on job activity and in sync with the next steps. When Scheduling is integrated with Timberline Office accounting or production management software, schedule updates can automatically initiate purchase order workflow and keep all related job reporting current.

### **Features and efficiencies.**

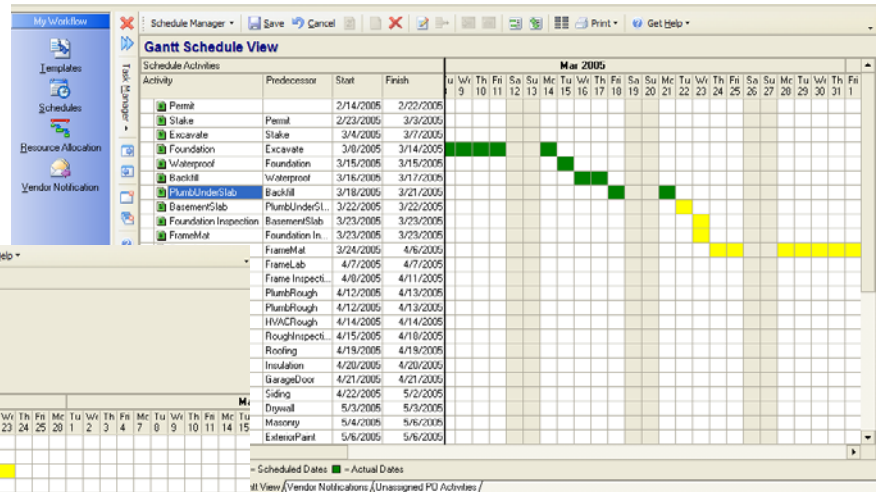
- Create schedules efficiently using schedule templates and information already contained in your Timberline accounting or production management software.
- Download information and let superintendents manage and update job schedules and task status from job sites on BlackBerry and PalmOS devices. Then automatically feed all field activity updates, including actual, projected and scheduled dates, back to the home office via wireless connections (See Wireless Scheduling).
- Share notes and reminders between the centralized schedule and handheld devices.
- Display screens including Schedule Manager, Gantt Chart View, Resource Allocations, and Vendor Notifications.
- Send automatic schedule notifications to trade contractors and suppliers via fax or e-mail.

## Features and efficiencies.

- View and sort schedules by community, job, trade, vendor, and activity.
- When individual activity is completed, trigger updates to purchase order status\* in the Purchasing (HMS) module (part of BuilderMT's Workflow Management suite of software).
- Analyze schedule of home closings, revenue cash flow, and liability of cash flow across communities with integration to Timberline Office.
- Handle multiple predecessors when scheduling.
- Use builder-definable checklists to ensure activities are complete before marking an activity as complete.

Complete	Remind	Activity	Duration	Baseline Start	Baseline Finish	Projected Start	Projected Finish	+/-	Variance Code / Desc	Scheduled Start	Scheduled Finish	Actual Start
		Permit	14	2/14/2005	3/3/2005	2/14/2005	3/3/2005	0				
		Stake	7	2/23/2005	3/3/2005	2/23/2005	3/3/2005	0		2/14/2005	2/22/2005	
		Foundation	14	3/4/2005	3/23/02	3/4/2005	3/23/2005	0				
		Excavate	2	3/4/2005	3/7/2005	3/4/2005	3/7/2005	0	V03 - Weather	3/4/2005	3/7/2005	
		Foundation	5	3/8/2005	3/14/2005	3/8/2005	3/14/2005	0		3/8/2005	3/14/2005	
		Waterproof	1	3/15/2005	3/15/2005	3/15/2005	3/15/2005	0		3/15/2005	3/15/2005	
		Backfill	2	3/16/2005	3/17/2005	3/16/2005	3/17/2005	0		3/16/2005	3/17/2005	
		PlumbUnderSlab	2	3/18/2005	3/21/2005	3/18/2005	3/21/2005	0		3/18/2005	3/21/2005	
		BasementSlab	1	3/22/2005	3/22/2005	3/22/2005	3/22/2005	0		3/22/2005	3/22/2005	
		Foundation Inspection	1	3/23/2005	3/23/2005	3/23/2005	3/23/2005	0		3/23/2005	3/23/2005	
		Framing	12	3/23/2005	4/7/2005	3/23/2005	4/7/2005	0				
		FrameMat	0	3/23/2005	3/23/2005	3/23/2005	3/23/2005	0		3/23/2005	3/23/2005	
		FrameLab	10	3/24/2005	4/6/2005	3/24/2005	4/6/2005	0		3/24/2005	4/6/2005	
		Frame Inspect	1	4/7/2005	4/7/2005	4/7/2005	4/7/2005	0		4/7/2005	4/7/2005	
		Rough	5	4/8/2005	4/14/02	4/8/2005	4/14/2005	0				
		PlumbRough	2	4/8/2005	4/11/2005	4/8/2005	4/11/2005	0		4/8/2005	4/11/2005	
		ElectricRough	2	4/12/2005	4/13/2005	4/12/2005	4/13/2005	0		4/12/2005	4/13/2005	
		HVACRough	2	4/12/2005	4/13/2005	4/12/2005	4/13/2005	0		4/12/2005	4/13/2005	
		RoughInspect	1	4/14/2005	4/14/2005	4/14/2005	4/14/2005	0		4/14/2005	4/14/2005	
		Roofing	4	4/15/2005	4/20/02	4/15/2005	4/20/2005	0				
		Roofing	2	4/15/2005	4/18/2005	4/15/2005	4/18/2005	0		4/15/2005	4/18/2005	
		Template: Plan R306		2/14/02	6/21/02	2/14/02	6/21/2005	0				

Set multiple start and finish dates in the master schedule. Include baseline, projected, scheduled, and actual dates plus variance codes, notes, reminders, and more.



Builder can view or print in Gantt View for quick timeline.

Resource Allocation Criteria

Trade: Foundation Community

Date Range: [ ] to [ ] for [ ] Baseline [ ] Scheduled [ ] Projected [ ] Actual

Supplier Information	Job Number	Lot Number	Activity	Start	Finish	Feb 2005	Mar 2005	Apr 2005	May 2005
Unassigned									
Beaverton Concrete	AH0000000		Stake	2/15/2005	2/23/2005	█			
	AH0000000		Foundation	2/8/2005	2/14/2005	█			
	AH0000000		Waterproof	2/21/2005	2/21/2005		█		
	AH0000000		BasementS	2/17/2005	2/17/2005		█		
	AH0100301	003	Stake	7/11/2003	7/21/2003			█	
	AH0100301	003	Foundation	2/11/2005	2/17/2005	█			
	AH0100301	003	Waterproof	3/1/2005	3/1/2005		█		
	AH0100301	003	BasementS	2/14/2005	2/14/2005		█		
	CR0100201	002	Foundation	3/8/2005	3/14/2005			█	
Miller Flatwork	CR0100201	002	Stake	2/23/2005	3/3/2005			█	
	CR0100201	002	Waterproof	3/15/2005	3/15/2005			█	
	CR0100201	002	BasementS	3/22/2005	3/22/2005			█	

Determine the resource load of each sub and supplier by job. Move jobs to different vendors to balance resources and stay on schedule.

Scheduling, developed and supported by BuilderMT, is part of the BuilderMT Workflow Management Suite. It is also part of the Timberline Office production management suite of products, fully integrated financial and operations software for construction and real estate professionals.

\*Feature available only when using the software in conjunction with Timberline Office Production Management.